



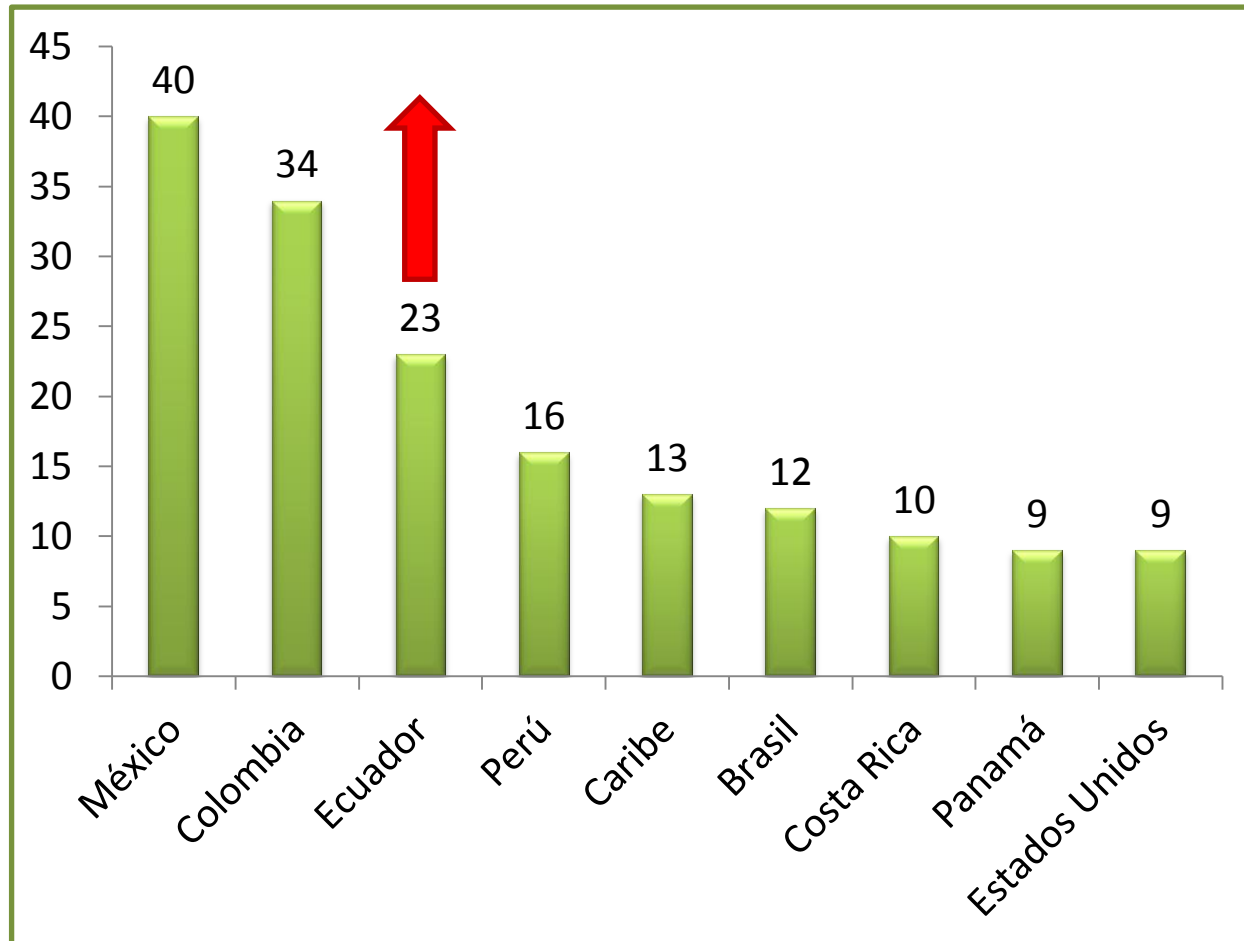
Rediscovering *Magnolia lozanoi* after 26 years and its conservation implications

Álvaro J. Pérez, Claes Persson, Nicolás Zapata & J. Antonio Vázquez-García

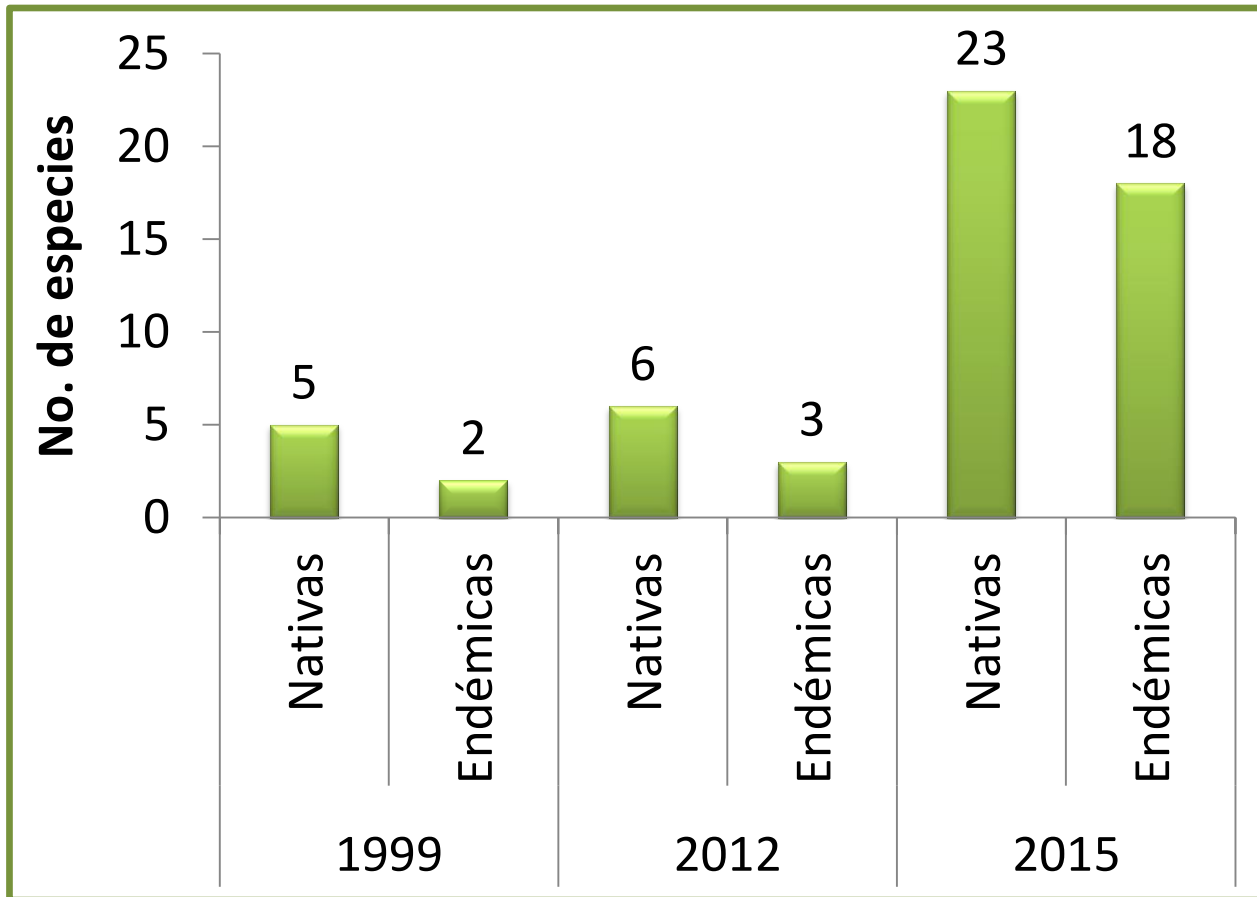




Magnolia's diversity in the Neotropic



Magnolia diversity in Ecuador



7% world diversity

15% Neotropic diversity

subject.
Dugandiodendron



■ M. yantzazana

▼ M. shuariorum

★ M. lozanoi

● M. jaenensis

⬡ M. bankardiorum



History

RAP_july 1993 (CI + POLITECNICA+
ECUADORIAN ARMY): Campamento Achupallas



Alwyn H. Gentry

.. open bromeliad sward with scattered shrubs and small trees

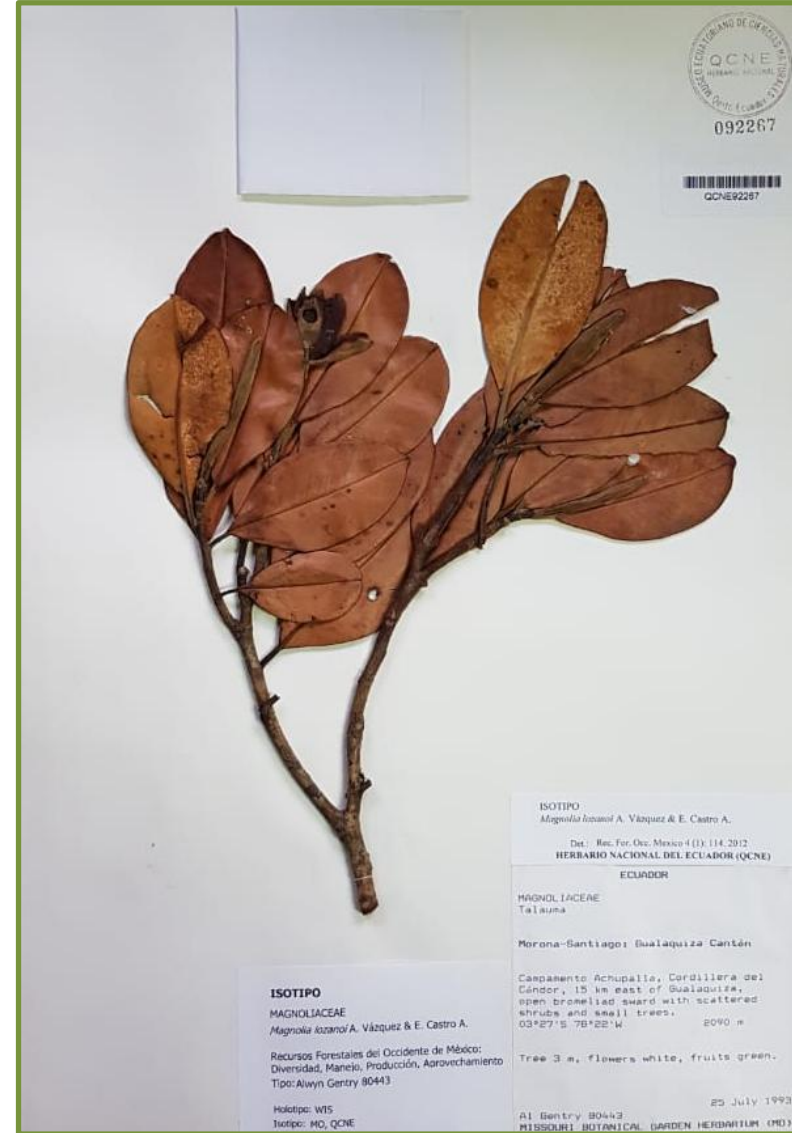


2012

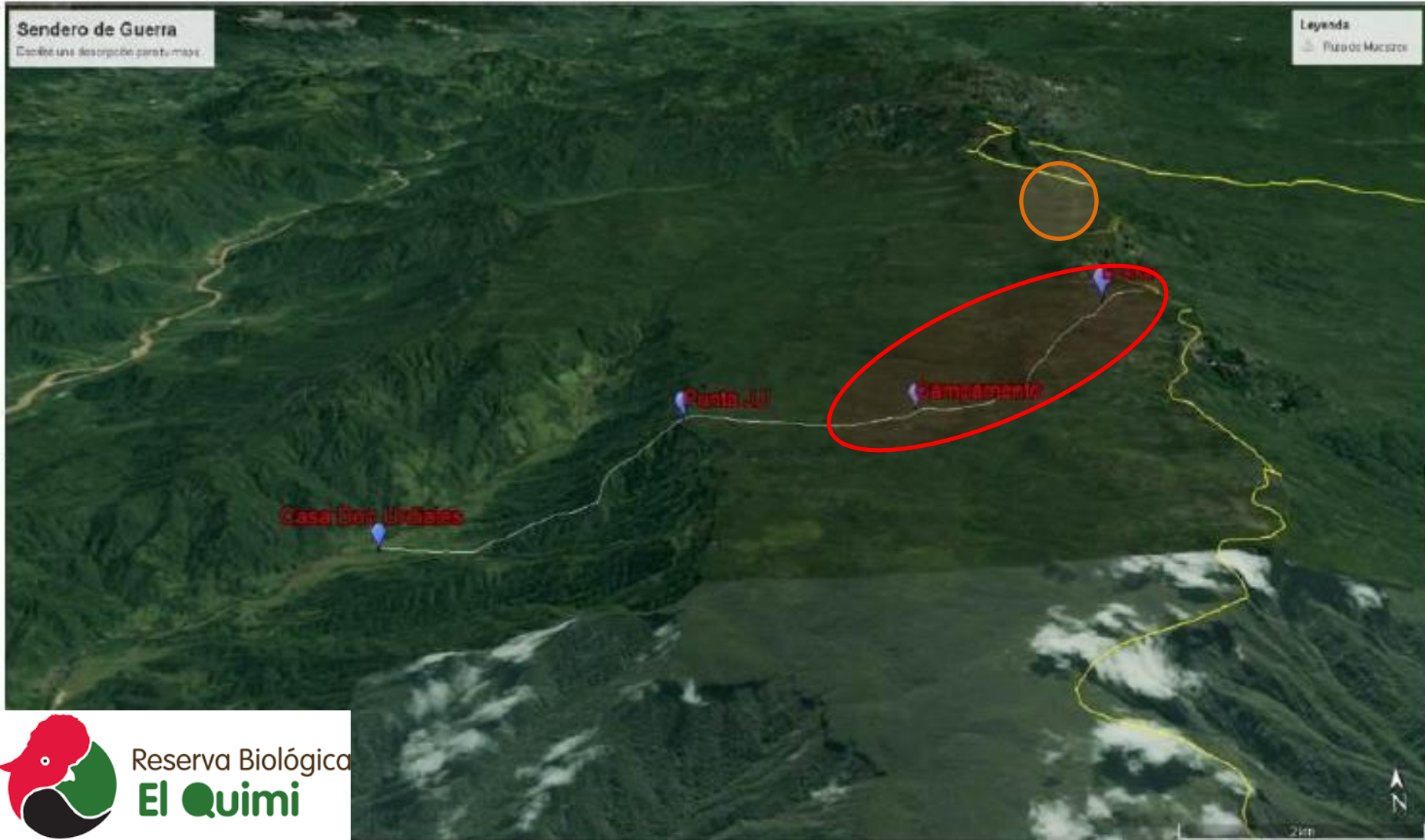
Magnolia lozanoi A. Vázquez & Castro-Arce



WIS, MO,
F, QCNE



26 years later.....January 2019



Ecosystem



12 m

Habit

3 m



0 m



0 m

Leaves

Elliptic to obovate

4.5–9.5 × 2.5–5 cm



Basidiomycota



Ascomycota, Hypocreales, Nectariaceae

Flower

5–6 cm in diam.

Hypsophylls 3

Sepals 3
2.7–3 × 1.4–1.5 cm

Petals 6
2.6–2.8 × 1.3–1.5 cm

Stamens 50–72



Possible pollinators



Chrysomelidae
Altisinae



Fruit

2 – 2,5 x 1,5 – 2,3 cm
2-8 carpels
1 – 2 seeds per carpel





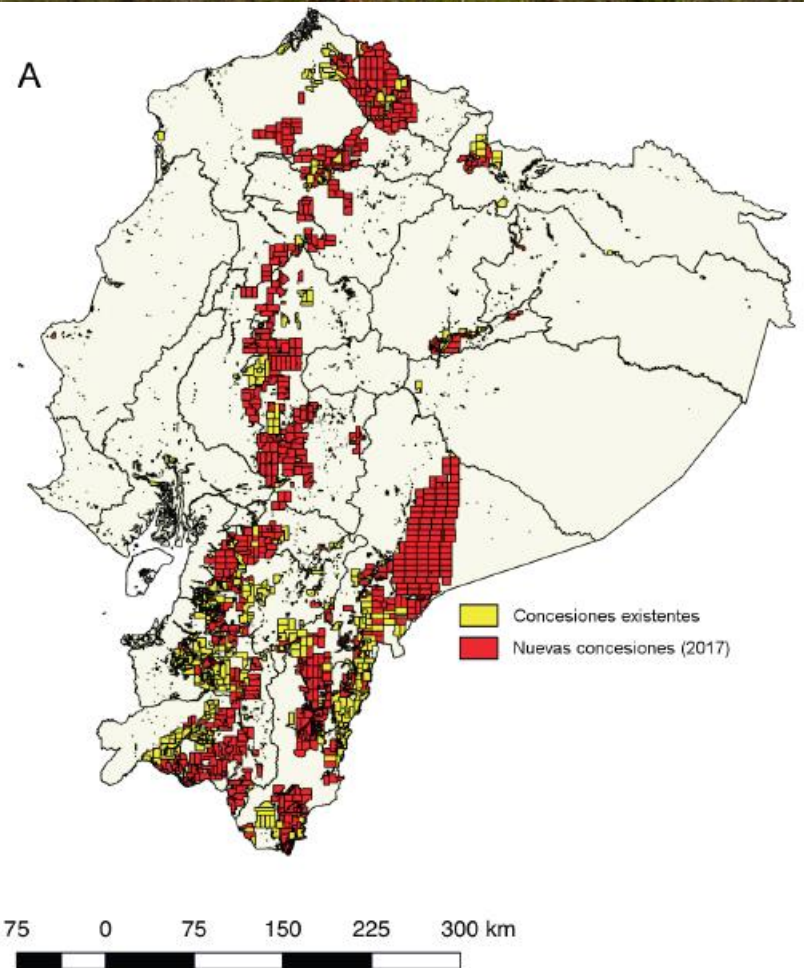
Conservation implications

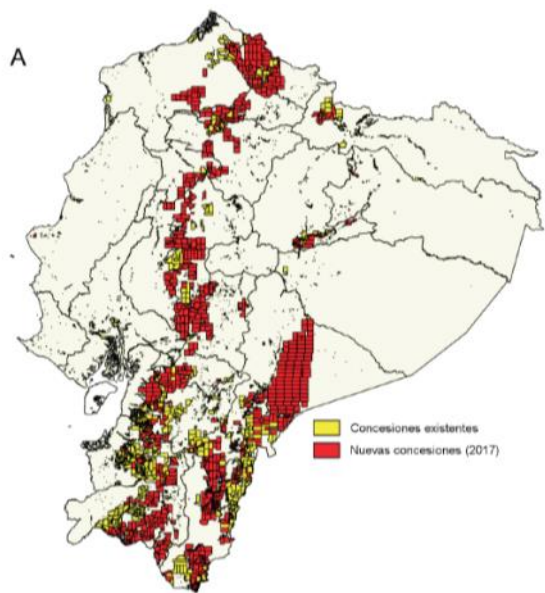
- 20 individuals were seen
- The population is in good condition ... no diseases, herbivory
- Trees were flowering and fruiting
- No seedlings



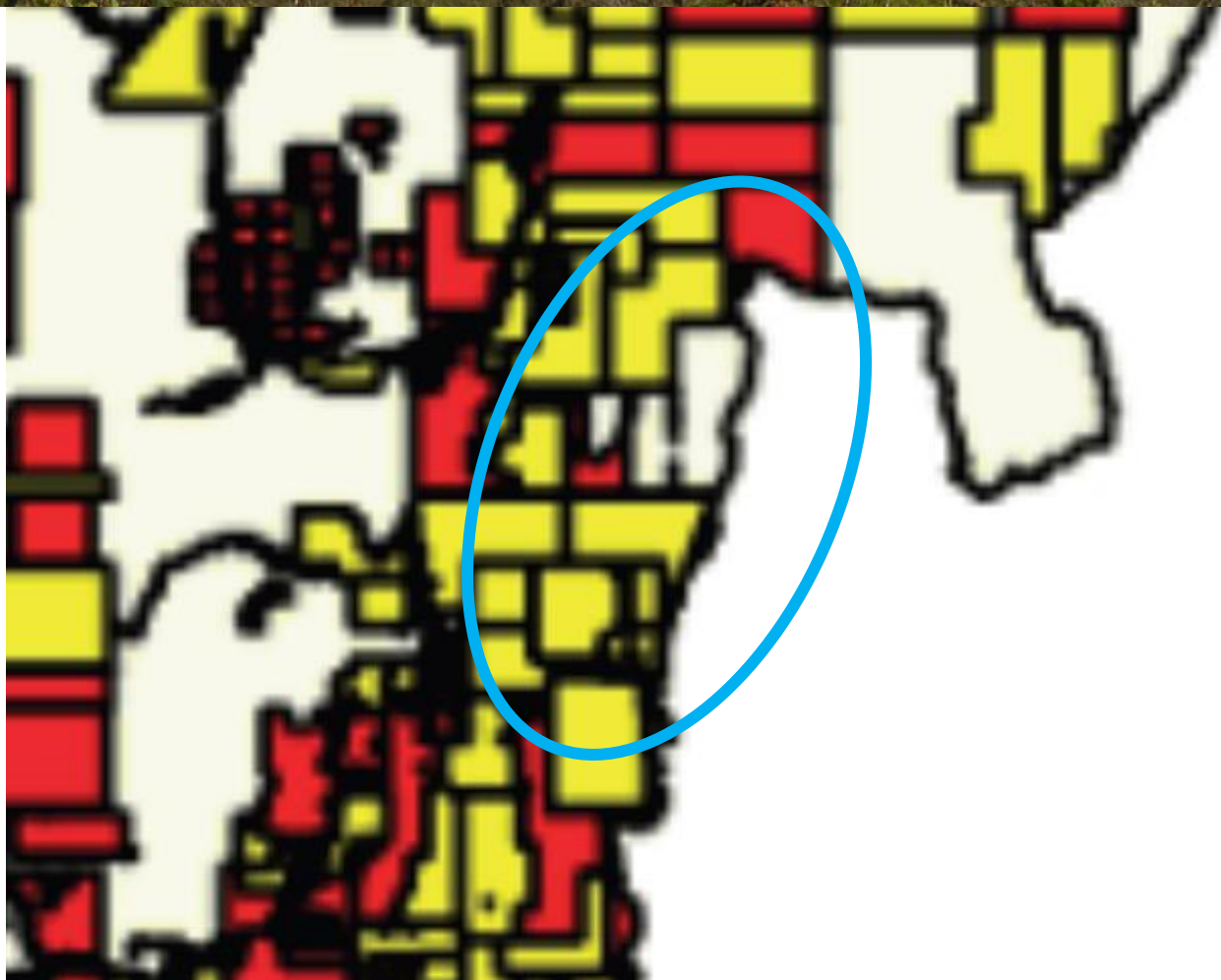
Conservation implications

- Opencast mining
“Mirador project”





75 0 75 150 225 300 km

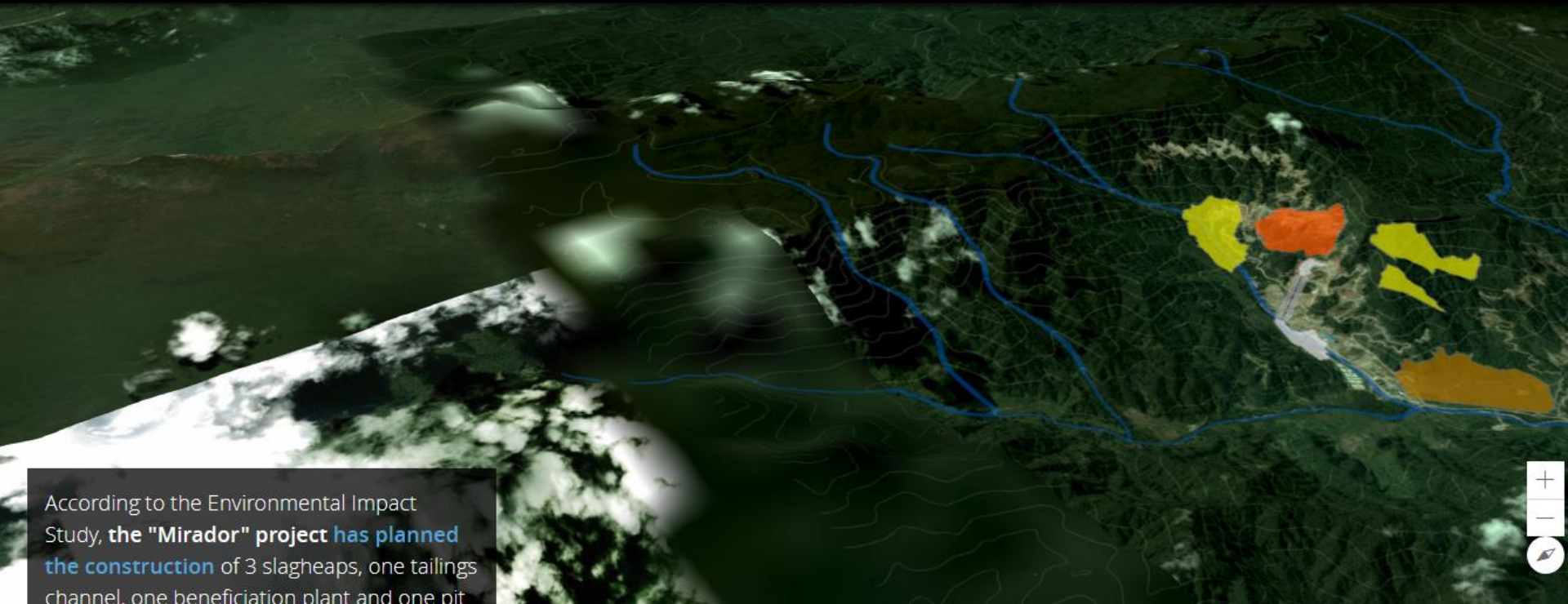
A scale bar showing distances in kilometers. The markings are at 75, 0, 75, 150, 225, and 300 km.

Mazabanda *et al.* 2018

HOME · ARCHIVE · SECTORS · SYNTHESIS · INTERACTIVE · COUNTRIES · OTHER · ABOUT MAAP



Impacts of Mining Project "Mirador" in the Ecuadorian A...



According to the Environmental Impact Study, the "Mirador" project has planned the construction of 3 slagheaps, one tailings channel, one beneficiation plant and one pit

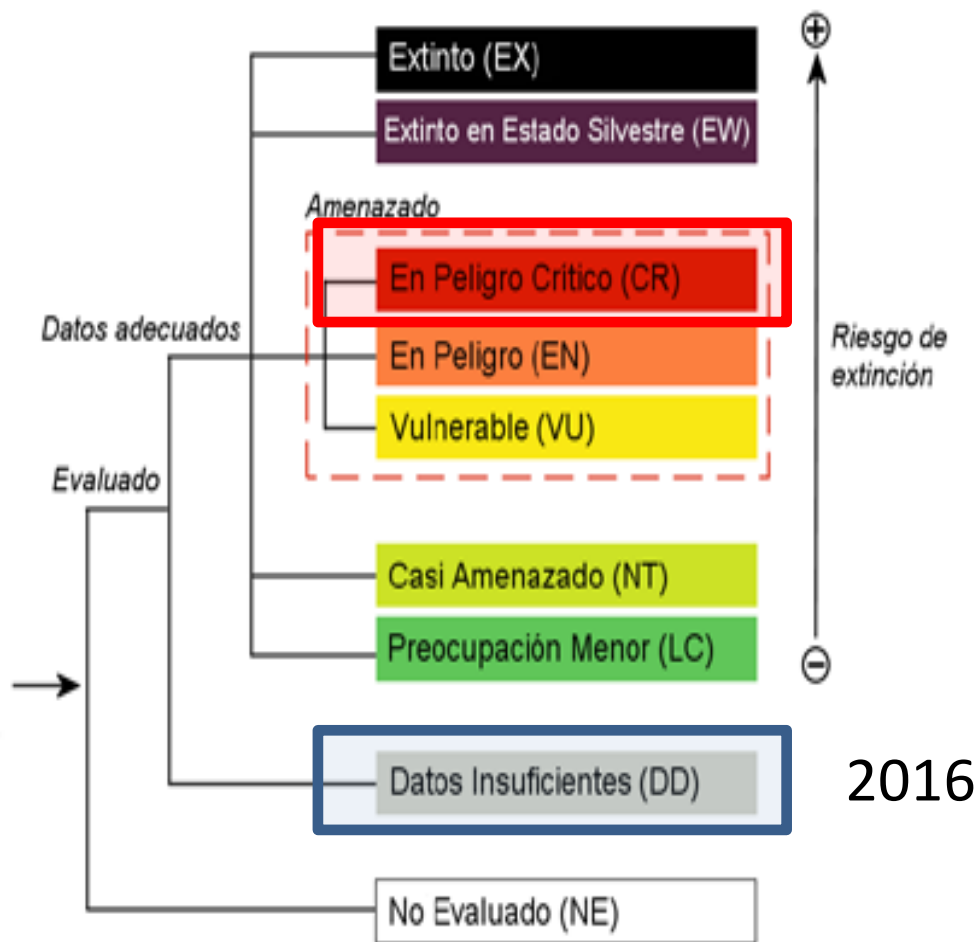
DigitalGlobe, GeoEye, Earthstar Geographics | Sources: USGS, NGA, NASA, CGIAR, GEBCO, N Robinson, NCEAS, NLS, OS, NMA, Geodatastyrelsen and the GIS User Community

Powered by Esri

The Red List of Magnoliaceae

revised and extended

Malin Rivers, Emily Beech, Lydia Murphy & Sara Oldfield



Acknowledgements

- Staff from Reserva Biologica El Quimi
- Community of Valle del Quimi
- L. Albuja, R. Barriga, A. Armendáriz (EPN)

